

1855 58th Street NE  
Tacoma, WA 98422  
(877) 952-6098 toll free  
(253) 952-6206 fax  
info@caserv.com  
www.caserv.com

## Did You Know?

Sage Software offers free Web seminars designed to help you better manage your business.

Current offerings include:

- Business Intelligence Solutions
- Distribution Solutions
- Gain Better Control Over Your Inventory With Extended Solutions
- Sage MAS 90—BusinessWorks Edition

For the current Sage MAS 90 and Sage MAS 200 Webcast schedule or to register [click here](#)



SAGE MAS 90 SAGE MAS 200  
SAGE MIP FUND ACCOUNTING  
SAGE BUSINESSWORKS  
SAGE BUSINESSVISION

# Powerful New Functionality Included In Version 4.3

**S**age MAS 90 and Sage MAS 200 ERP version 4.3 is scheduled for release this summer. In this article, we'll provide you with an overview of the powerful new features and functionality in this release.

## New BIE Views

Business Insights Explorer (BIE) is a powerful ad-hoc inquiry, drill-down, and drill-around tool included with your Sage MAS 90 system. BIE comes standard with several pre-built views of your data. The pre-built views give you immediate access to information most commonly needed. In version 4.3 a dozen new views that focus on data contained in the General Ledger, Accounts Payable, Inventory Management, and Purchase Order modules are added. The new views are:

- » Account
- » Account Transactions
- » Account Budgets
- » Vendor
- » Vendor History Invoices
- » Vendor Open Invoices
- » Vendor Repetitive Invoices
- » Vendor Payments
- » Item
- » Item Transactions
- » Purchase Order
- » Vendor History Receipts

## Charting Tab

Charts allow you to quickly detect trends or pinpoint potential problem areas. Version 4.3 introduces a new Chart Tab within Business



Insights Explorer. With the Chart tab you can generate a chart based on a view you create in BIE. Charts have customized titles to display the data series you select and are available as bar, line, area, and pie chart types.

Additional options for designing your chart include the ability to set the number of data points for each series you want to display. The series information appears in the order that it is selected.

## Updated Dashboard

Version 4.3 of the Business Insights Dashboard has an overall updated look and incorporates a number of customer-requested options. From your desktop, you can select up to 12 different standard graphical reports and include them on an HTML-based start page. A convenient start page wizard helps

*(continued on page 2)*

## Version 4.3

(continued from cover)

you select which reports and graphs to display, the order they are displayed, and the level of detail to be included.

You can place detail or summary views on the main dashboard page. You even can generate dashboard pages independent of Internet connectivity or use Microsoft Internet Explorer and Outlook. The charts and graphs displayed on the dashboard can include active links that allow you to drill down into the detailed information in the chart. And you can print any of the charts that you create, including printing to a PDF file.

### Paperless Office

Paperless Office gives you the ability to save time and money by eliminating the need to print lengthy reports and use precious office space for storage. It also delivers quick and easy access to files and makes them available electronically to workers in separate physical locations. Imagine being able to quickly recall the report you want, search for the information you need within that report, and then print only the pages you want. Paperless Office also includes powerful electronic forms delivery functionality to improve and streamline communications. You can send electronic documents by e-mail or fax to your vendors and customers.

In version 4.3, many of the Paperless Office add-on solutions have been incorporated into standard Sage MAS 90 and MAS 200.

The following paperless forms and reports are included in version 4.3:

- » Payroll Direct Deposit Stubs
- » Purchase Orders
- » Vendor Returns
- » Sales Orders
- » Sales Order Invoices
- » Return Merchandise Authorizations
- » Accounts Receivable Invoices
- » Job Cost Invoices

- » Journals and Registers
- » Period End Processing Reports
- » All standard reports generated by the system, including reports created in Business Insights Reporter

If you already own Paperless Office Extended Solutions titles, this change will lower your total cost of ownership because you'll no longer have to pay a separate maintenance and support fee on the 11 Paperless Office Extended Solutions titles included in this release. Call for a list of the included titles.

If your company utilizes the Sage MAS 90 Payroll module, the Paperless Office Employee Self-Service functionality also is included. This solution allows employees to securely access their historical payroll information and conveniently view and print their own payroll pay stubs without assistance from your busy human resources personnel.

### Federal And State eFiling Option

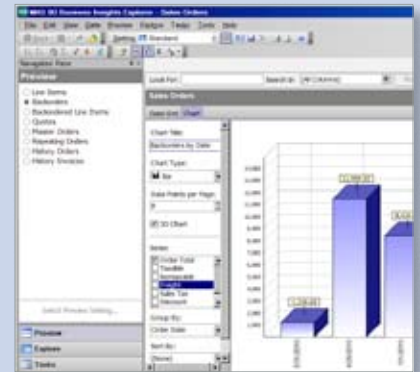
To streamline the tax reporting process, version 4.3 introduces **Federal and State eFiling and Reporting**. The new capabilities include over 250 federal and state Unemployment, Withholding, and New Hire reports. Also included is 1099 reporting through the Accounts Payable module. The eFiling Service is offered on a transaction fee basis to streamline your tax reporting process for W2s, 1099s, and State form reports.

All federal and state forms will be available to print and mail with no fees. You will be able to utilize blank, perforated W2 and 1099 forms, available for purchase from the Sage Software Forms Division, without having to align pre-printed forms.

### Fixed Assets Enhancements

In version 4.3, the Fixed Assets Module will be even more closely associated with the

core functionality in Sage MAS 90. You will have the option to auto-create Assets during Accounts Payable invoice data entry. During Purchase Order Entry and Receipt of Invoice, the register will automatically update the asset to the Fixed Assets Module, based on the asset template you select from Purchase Order Entry.



From the new Chart tab, you'll be able to quickly generate an on-the-fly chart based on the view you create in BIE.

### Embedded Direct Deposit

Beginning with version 4.3, Direct Deposit functionality is available for purchase as an add-on to your Payroll module.

If you currently own the Direct Deposit Extended Solutions title, version 3.71 or higher, you easily can convert over to the new embedded solution.

### And There Is More!

There are dozens of usability and customer requested enhancements included with the 4.3 release that we don't have room to cover in this article. Please give us a call for more information. ✨