

**Volume 6
Issue 2
April 2006**

Headline News

Sage MAS 90 and Sage MAS 200 Version 4.1 was awarded a perfect 5-Star score by *The CPA Technology Advisor* in its December 2005 Review of High End Accounting.

Products were judged in several categories, including: Modules Available/Scalability, Ease of Use/Transaction Entry, Customization/Security, Integration/Import/Export, Reporting, Support/Training/Help System, and Relative Value. Sage MAS 90 and Sage MAS 200 received perfect scores in every category.



SAGE MAS 90 SAGE MAS 200
SAGE MIP FUND ACCOUNTING
SAGE BUSINESSWORKS

Why You Should Upgrade To Version 4.1

If you're looking for tools that will make your job easier and allow you to be more productive and efficient, look no further than Sage MAS 90 ERP Version 4.1. Let's take a closer look at what this very significant upgrade has to offer.

Custom Reporting Simplified

Sage MAS 90 has long employed the industry-standard custom report writer Crystal Reports® to enable users to create custom reports. Crystal is enormously powerful, but it can be difficult to master. Business Insights Reporter, introduced in Version 4.0 and enhanced in Version 4.1, combines the power of Crystal Reports with a user-friendly Wizard-based front end.

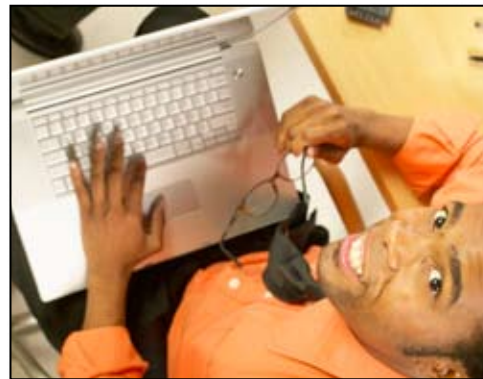
Business Insights Reporter is easy to use and presents your Sage MAS 90 data in logical views that make selecting the right table for your report simple. While you don't have to be an expert to create reports using this tool, expert users will appreciate that you can use Crystal Reports to further define, refine, and customize your Business Insights Reporter reports. The new role-based security is fully supported under Business Insights Reporter, enabling you to define which roles have access to which reports.

As a true Windows product, Business Insights Reporter includes several output option formats including Excel, Adobe PDF, or XML. All those new User Defined Fields (UDFs) you can add with the Custom Office module are available for inclusion on your reports, and since those UDFs are now held in the corresponding main data file, you won't have to bother with the complex linking of files to locate those UDFs.

Dual Grid Entry Screens

Dual grid entry screens were introduced in the Version 4.0 General Ledger module. Version 4.1 incorporates the flexible dual grid entry screens into the Sales Order, Accounts Receivable, Bank Reconciliation, and RMA modules.

The dual grid entry screens offer a clean, efficient interface. Move rarely used fields to



New dual grid entry screens help speed data entry in the Sales Order, Accounts Receivable, RMA, and Bank Reconciliation modules.

the secondary grid to reduce screen clutter and speed data entry. You can resize columns to fit your data, arrange the columns to make data entry more efficient, and even move them on-the-fly to accommodate a desired order. You can place the secondary screen below the initial line details or alongside it.

Customize your column widths to fit your data viewing needs. A new button allows you to quick-

Continued on Page 2

Compliments of:



**COMPUTER
ACCOUNTING
SYSTEMS, INC.**

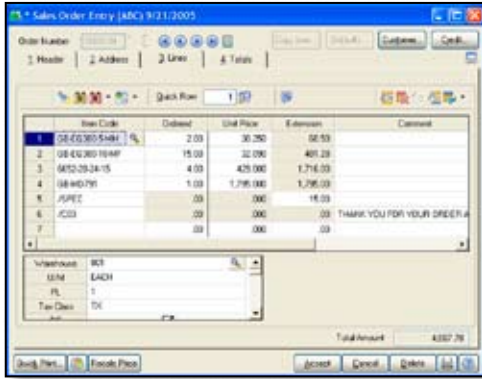
1855 58th Street NE
Tacoma, WA 98422

(877) 952-6098 toll free
(253) 952-6206 fax

Email:
mike.renner@caserv.com

Web Site:
www.caserv.com

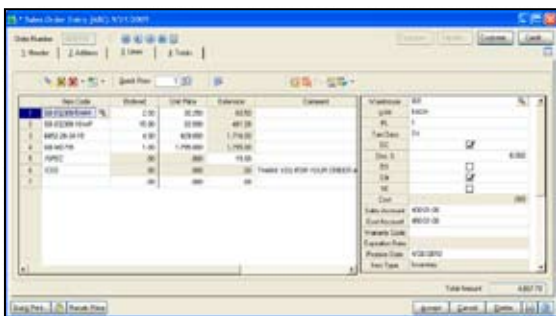
Why You Should Upgrade To Version 4.1 CONTINUED



Flexible, customizable dual grid-entry screens streamline data entry tasks.

undo any unsaved changes. Now you can scroll through all data entry lines; this will vastly improve data entry efficiency. New hyperlinks provide quick access to related information. For example, from Sales Order entry you could hyperlink to Terms Code Maintenance. A Quick Row feature lets you instantly jump to the line you want without scrolling through lines you don't want.

Since different industries, different companies, different departments, even different individuals all have unique techniques for performing data entry, the flexibility to customize is key. Some industries rely almost exclusively on the item number, rarely referring to or changing an item's description. Some companies may require a long expanded description, while others can make do with 15 or 20 characters. A company with only one warehouse won't need to see the warehouse code. For one selling exclusively to wholesalers, the item's tax status is superfluous. If you only sell by the board foot, accessing the Unit of Measure field isn't a priority.



Place the secondary window alongside or beneath the main entry window. You can even toggle between the two.

The dual grid entry screens give you the flexibility to configure the data entry windows to fit the way you do business.

The dual-grid screen proves its worth in the Accounts Receivable module. The Customer Maintenance task in Version 4.1 offers a new navigation window that makes exploring current and historical invoice transactions much more straightforward. Highlight a particular invoice and all of the transactions related to that highlighted invoice will appear in the bottom pane; this saves you from having to drill down to uncover the details.

Easy Mail Merge

Beginning with Version 4.1, a new mail merge output option to Microsoft Word is included in Business Insights Reporter and all standard reports included with the General Ledger, Accounts Receivable, Sales Order, Bank Reconciliation, and RMA modules. When you access a Business Insights Reporter report or a standard report, you'll see a new option to process the report output directly to Word.

Use this option to output your data and then present it dynamically in Word using the embedded Mail Merge capabilities. This feature will allow you to quickly and easily produce customer or vendor mailings that include pertinent Sage MAS 90 data.

Security Events

The whole security structure of Sage MAS 90 has been improved; it adds flexible controls and streamlines administrative tasks. The new role-based security gives you an exceptional level of control over who has access to various programs and tasks, and even allows you to control what type of access a user has. For example, some users may have full-access rights while others have view-only rights.

You will still set up individual users or user groups and those users' corresponding passwords, but from there on, security setup is decidedly different. Once you've

set up users, you will assign those users to one or more roles. Examples of roles are customer service representative, payroll entry operator, or sales manager. You'll then assign specific access rights to each of these roles. Assigning access rights consists of applying security control attributes such as: Full Control, Create, Modify, Delete, and View Only to each role and task combination. In this way, for each task within a particular role, you have complete control over who can create, modify, or delete entries.

You can structure security events for added control within your organization. For example, you can prevent an On-Hold sales order from being invoiced or prevent an item from being oversold based on the available quantity. Another security event allows for manager overrides of back-ordered items and yet another will allow you to prevent customer records from being created on-the-fly.

Those special module-level override passwords defined in Setup Options in previous versions are replaced in Version 4.1 with security events set in the main security system, providing greater control and much more flexibility in defining user access.

Sage Information Center

Version 4.1 launched the new Sage Information Center. This handy resource keeps the data and information you refer to on a daily basis at the ready. The Information Center is a component of Sage Desktop, a common resource center being deployed across many Sage Software products.

The Information Center is a dynamically updated source of relevant product information, tips, announcements, training information, including access to Sage Software's regional training calendar, and customer feedback links.

We've highlighted some of the powerful features new to Version 4.1 or enhanced with this latest version.

Call us for more details about upgrading to Version 4.1.

