

**Volume 5**  
**Issue 2**  
**April 2005**

**Headline News**

MAS 90® Version 4 was released one year ago and was the most comprehensive release to the product in a decade. If you have not yet upgraded to Version 4.x, you're not benefiting from features like: Dual Grid-Entry Screens, Unlimited Budgets, Financial Statement Setup Wizard, Expanded General Ledger Account Number, and Expanded Numeric Fields. Don't miss out—call us for complete upgrade information.



MAS 90 MAS 200 MIP  
BUSINESSWORKS GOLD

## Looking Ahead To Version 4.1

**W**hen Best Software released MAS 90® and MAS 200® Version 4.0 it introduced enhancements to the Library Master and General Ledger modules. These enhancements encompassed an Enhanced User Interface, Grid Entry Screens, and Role-based Security, among other features. The majority of the enhancements were only for the General Ledger and Library Master modules, with the promise that the global enhancements would be incorporated into other modules as they were released under Version 4.

Best Software is due to release MAS 90 and MAS 200 Version 4.1 in late summer 2005. In this upcoming release, the enhancements will be extended to the

**Accounts Receivable, Sales Order, Bank Reconciliation, and Return Merchandise Authorization (RMA) modules.** In this article, we highlight the global enhancements planned for Accounts Receivable, Sales Order, Bank Reconciliation, and Return Merchandise Authorization modules.

**Grid Entry Screens**

The Grid Entry screens you've begun to enjoy in the General Ledger module are being rolled out to the Accounts Receivable, Bank Reconciliation, Sales Order, and Return Merchandise Authoriza-

tion modules.

The screens are efficient, uncluttered, and user friendly. If you have not yet used these new screens, you may be saying, "What can a grid entry screen do for me?" A major benefit is that the screens are designed to make data entry more efficient.

The Grid Entry system results in near limitless data entry flexibility. Where appropriate,



Enhancements to Accounts Receivable, Sales Order, Bank Reconciliation, and Return Merchandise Authorization modules give you much to look forward to in Version 4.1.

screens will utilize a dual-entry grid, allowing you to place more frequently used fields in the primary grid, and lesser-used fields in the secondary grid. Now you can view the essential information about each data record without having to scroll the screen from side to side.

You can re-size either grid by grabbing a corner. You also can sort and re-size the columns within either grid. Any non-required field may be hidden—entire columns can be hidden from view. You can quickly add, delete, and re-order lines. You will have the ability to move columns in any order desired, and even move a column from one grid to another. A scroll bar will automatically appear when a grid entry window contains more data than its size permits viewing. The Grid Entry system enables you to design data

Continued on Page 2

Compliments of:



**COMPUTER  
ACCOUNTING  
SYSTEMS, INC.**

1855 58th Street NE  
Tacoma, WA 98422

(877) 952-6098 toll free  
(253) 952-6206 fax

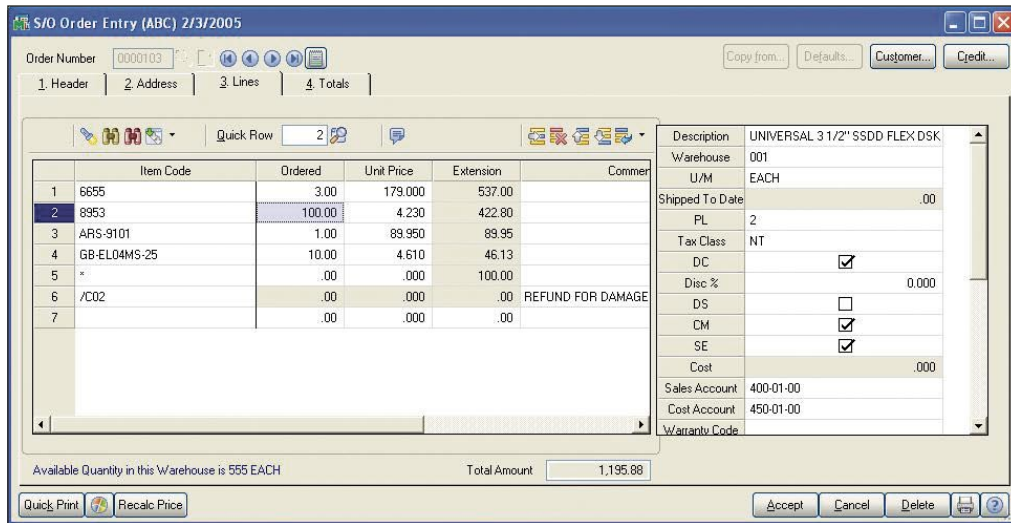
Email:  
mike.renner@caserv.com

Web Site:  
www.caserv.com

# Looking Ahead To Version 4.1 Continued

entry windows that work best for your company, streamlining entry tasks, and making Windows entry screens faster and easier than the old character-based screens.

Imagine the efficiency your staff will enjoy using these new screens as they perform data entry. Each user can set their own tab sequences and grid settings, including column sizes, column order, and dual grid field location.



New Grid Entry Screen for the Sales Order module.

## Crystal Reports

All bundled reports, listings, and forms will make use of the industry-standard Crystal Reports for report design and output. This adds tremendous flexibility for report customization and adds multiple report output options.

## Save Report Settings

The **Saved Reports Settings** feature will allow you to set up pre-defined report selection options for each report you access, reducing potential errors in report generation and streamlining the printing process. Three different types of Saved Reports Settings are supported with appropriate security (Public, Read Only, and Private) for changing and saving new settings.

## Improved Batch Auditing

With Version 4.1 your ability to audit transaction batches throughout modules is improved. The following additional data will be tracked

for each batch: the user who created the batch, the date/time that the batch was created, the user who last updated the batch, the date/time of the last batch update, and the record count per batch.

## Smart Memos

Version 4.1 will incorporate the new interface for Memo Management for the Accounts Receivable, Sales Order, Bank Reconciliation,

Sales Order, Bank Reconciliation, and Return Merchandise Authorization modules. The programs have security levels such as: Full Control, Create, Modify, Delete, and View Only. You will set these security levels by Roles within each program. For example, this enables you to offer data entry clerks *Create* and *Modify* authority in Sales Order Entry, without the ability to *Delete* an order. This feature provides exceptional control over who can create, modify, or delete entries.

## Right Mouse Click Increases Usability

Throughout the four newly updated modules, a *Right Mouse Click* will bring you relevant information such as: Company Code and Company Name, User Code and Name, Module Date, and Number of Records in Masterfile. Additionally, the *Right Mouse Click* will show you Related Tasks, enabling you to navigate more efficiently. As you would expect, the information only is available to those with security to the tasks presented.

## Powerful New UDFs

With Version 4.1, you can add user-defined fields (UDFs) to any data file within the four newly updated modules. The UDFs you create will reside in the actual data table, not in a separate UDF table—facilitating reports that include the UDFs. Define the source of the value of a UDF, specifying a default value, if you wish, or name the source from which a UDF value is inherited. For example, if you create a UDF in Customer Masterfile and create a second UDF for Sales Order Entry Header, you can specify that the value of the Sales Order Entry Header UDF is populated with the value from the Customer Masterfile UDF. Harness even more power by creating validation tables for your UDFs and selected existing fields. Include information from these tables on Crystal Reports and forms.

Look for more information on Version 4.1 in upcoming issues of *\*info for MAS 90*.

As always, call us with any questions you may have regarding MAS 90, or the upcoming release of Version 4.1. ★